



1

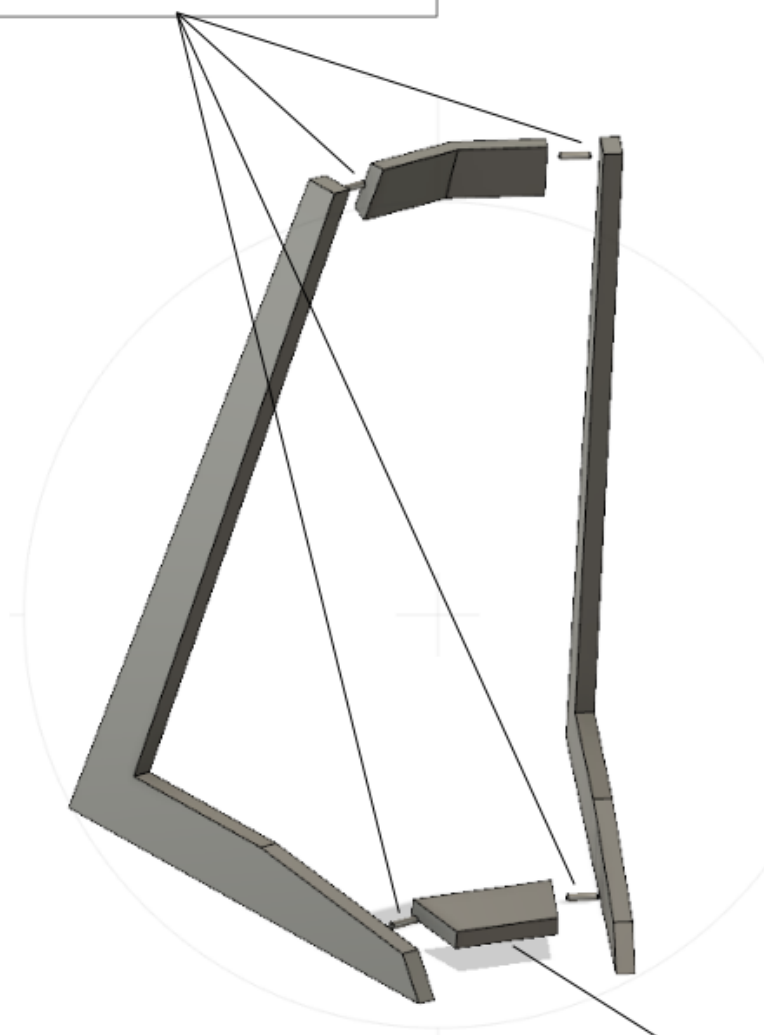


x 4



**TRAINER
TECHDECK**

MONTERINGSANVISNING



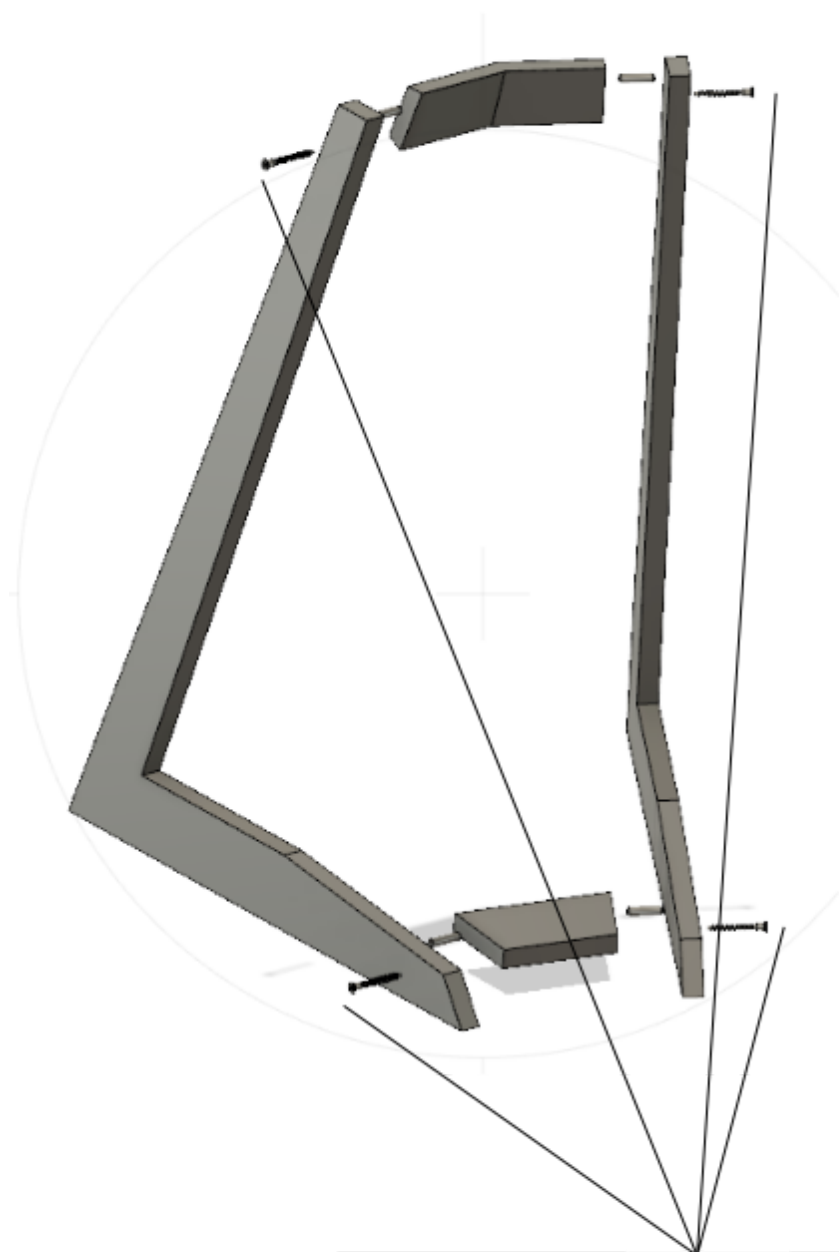
OBS!

Klistermärket ska
vara nedåt och
framåt.



**TRAINER
TECHDECK**

MONTERINGSANVISNING



2



x 4



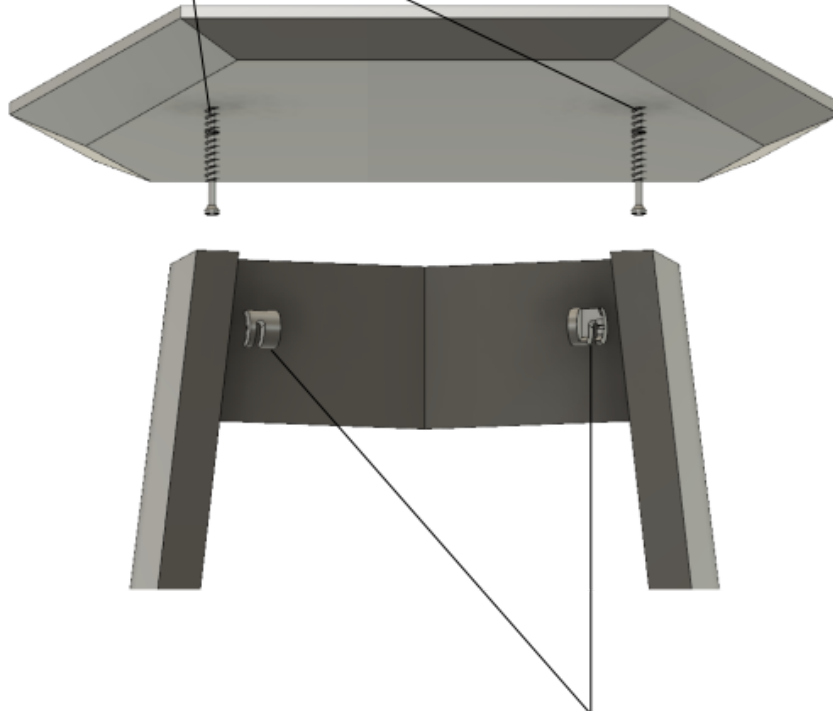
**TRAINER
TECHDECK**

MONTERINGSANVISNING

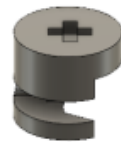
3



x 2



4



x 2

Använd en kort
stjärnskruvmejsel eller en
flat skruvmejsel.